



Building  
Our  
Islands

# ARTitecture

Email your design to  
marketing@lanntair.com  
Deadline 21st of March

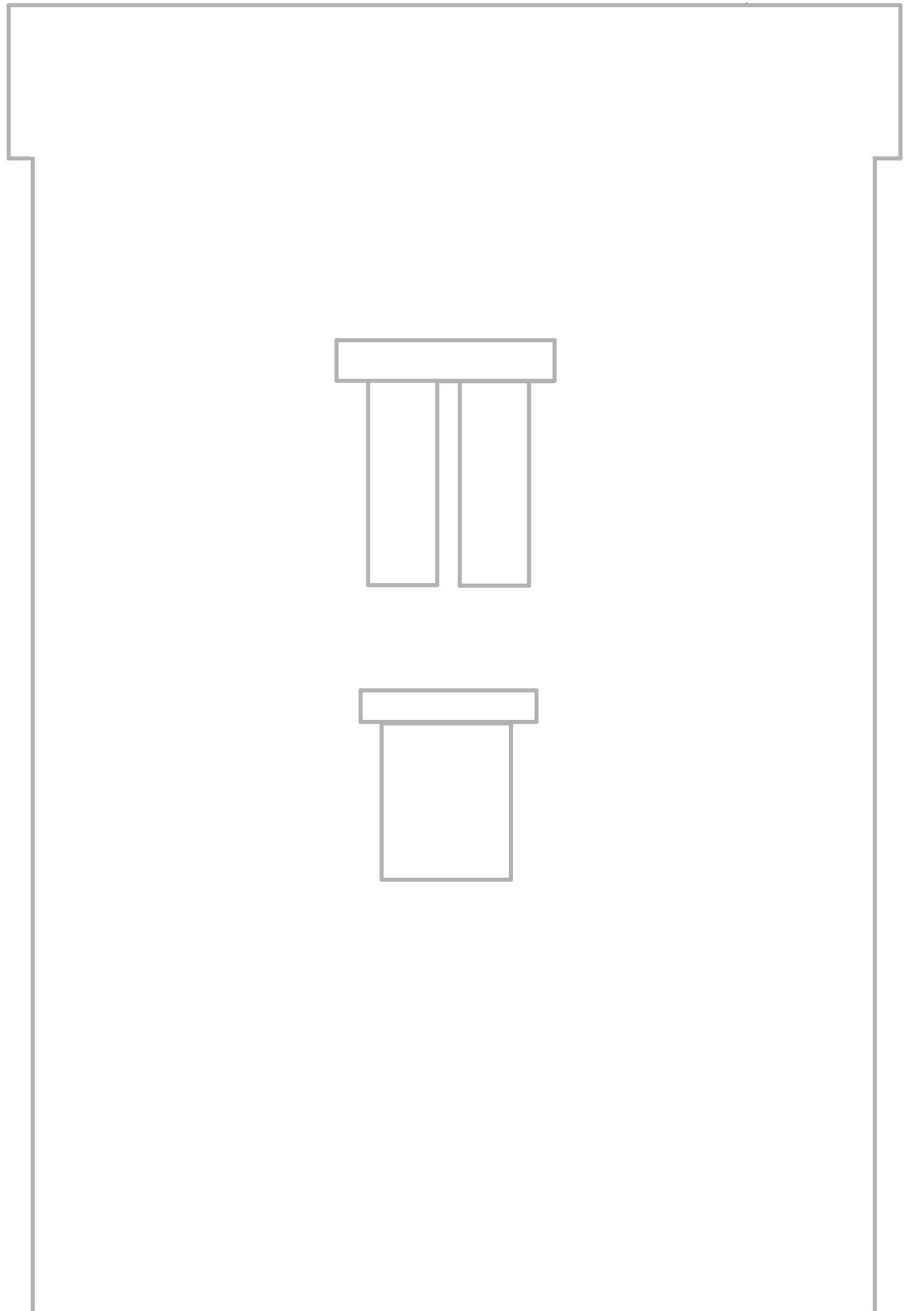
Artist's name:

## Lights on Sat 25 & Mon 27 March



### History of the Boatman's Tower

Built in the grounds of Lews Castle (1847-51), designed by Charles Wilson in a Tudor Gothic style, the boatman's tower probably followed later in the foreshore works along with the development of Cuddy Point, the Matheson Monument and the Lodges (Creed, Marybank and Porters). The boatman's tower, it was home to the boatman and his family and he ferried people to Stornoway from the Grounds.



#### How to create your ARTitecture:

Create your design inside of the building for your work of ART to be projected on the Boatman's Tower.

You can either bring in your completed "canvas" in person to An Lanntair or Museum nan Eilean or scan it to email it. If scanning please ensure it is high res but not more than 5MB.

Please visit [www.lanntair.com](http://www.lanntair.com) for more information on Building our Islands

